

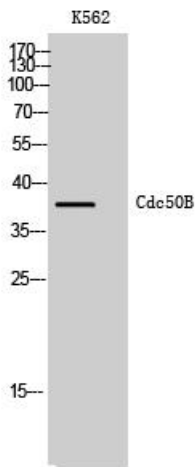


# Cdc50B Polyclonal Antibody

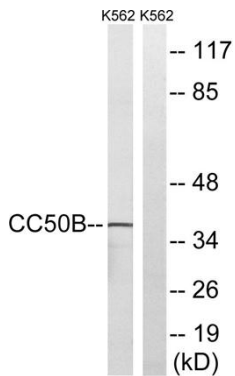
<b>Catalog No</b>	YP-Ab-16687
<b>Isotype</b>	IgG
<b>Reactivity</b>	Human;Mouse
<b>Applications</b>	WB;ELISA
<b>Gene Name</b>	TMEM30B
<b>Protein Name</b>	Cell cycle control protein 50B
<b>Immunogen</b>	The antiserum was produced against synthesized peptide derived from human TMEM30B. AA range:91-140
<b>Specificity</b>	Cdc50B Polyclonal Antibody detects endogenous levels of Cdc50B protein.
<b>Formulation</b>	Liquid in PBS containing 50% glycerol, 0.5% BSA and 0.02% sodium azide.
<b>Source</b>	Polyclonal, Rabbit,IgG
<b>Purification</b>	The antibody was affinity-purified from rabbit antiserum by affinity-chromatography using epitope-specific immunogen.
<b>Dilution</b>	Western Blot: 1/500 - 1/2000. ELISA: 1/40000. Not yet tested in other applications.
<b>Concentration</b>	1 mg/ml
<b>Purity</b>	≥90%
<b>Storage Stability</b>	-20°C/1 year
<b>Synonyms</b>	TMEM30B; CDC50B; Cell cycle control protein 50B; Transmembrane protein 30B
<b>Observed Band</b>	38kD
<b>Cell Pathway</b>	Cell membrane ; Multi-pass membrane protein .
<b>Tissue Specificity</b>	Heart,Lung,
<b>Function</b>	similarity:Belongs to the CDC50/LEM3 family.,
<b>Background</b>	similarity:Belongs to the CDC50/LEM3 family.,
<b>matters needing attention</b>	Avoid repeated freezing and thawing!
<b>Usage suggestions</b>	This product can be used in immunological reaction related experiments. For more information, please consult technical personnel.



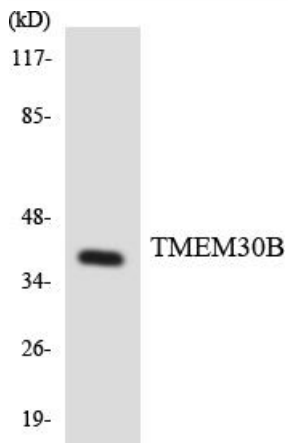
## Products Images



Western Blot analysis of K562 cells using Cdc50B Polyclonal Antibody



Western blot analysis of lysates from K562 cells, using TMEM30B Antibody. The lane on the right is blocked with the synthesized peptide.



Western blot analysis of the lysates from HeLa cells using TMEM30B antibody.